

Kings Cove Conservation Restriction Area

82-90 Bridge Street, Weymouth, Massachusetts

Presented by

VHB on behalf of Algonquin Gas Transmission, LLC

May 14, 2024



Meeting with you today

- Katie Kudzma, LSP, *Director, Site Investigation & Remediation* (VHB)
- Mark Costa, P.E., *Senior Water Resources Engineer* (VHB)
- Seth Lattrell, *Massachusetts Energy Market Lead* (VHB)
- Laura Laich, *Senior Environmental Scientist* (VHB)

Agenda

- Housekeeping Matters
- Key Terminology
- Review of Final Phase III Preferred Remedial Action Alternative
- Overview of Draft Phase IV Remedy Implementation Plan (RIP)
- Design Plans, Sections and Rendering
- Permitting Requirements
- Q&A

Housekeeping

- Review Emergency Exits
- Nearby Facilities
- Interpreter Available
- Meeting Recording in Progress

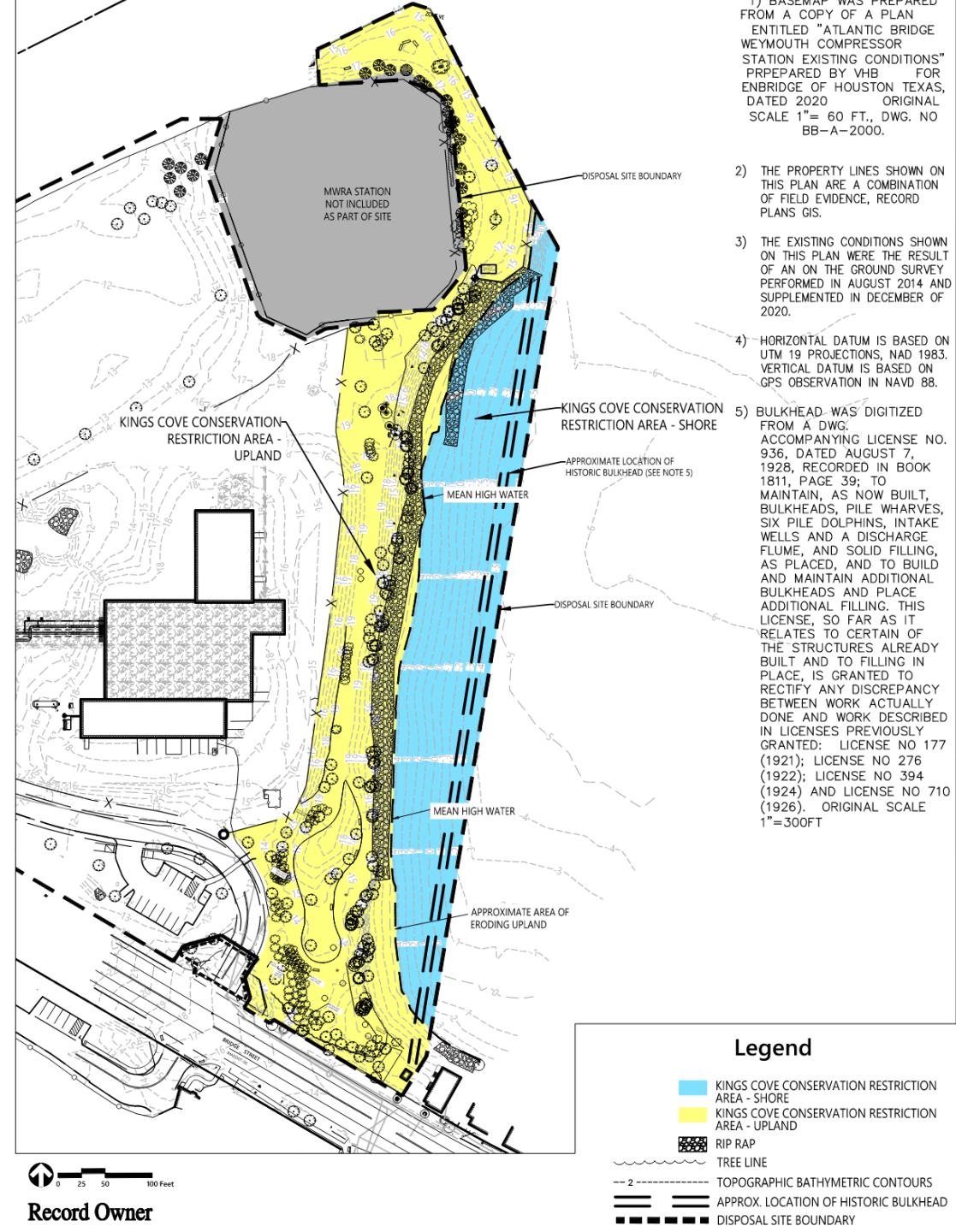


Key Regulatory Terminology

- Massachusetts Contingency Plan (MCP, 310 CMR 40.0000)
 - Regulations governing the assessment and cleanup of contaminated sites in Massachusetts.
- Condition of No Significant Risk (NSR)
 - When no oil and/or hazardous material at a site presents a significant risk to health, safety, public welfare or the environment during any foreseeable period of time.
- Phase III Remedial Action Plan (RAP)
 - Presents the identification, evaluation, and selection of the Remedial Action Alternative (RAA) (i.e., remedial solution).
- Phase IV Remedy Implementation Plan (RIP)
 - Report presenting the design and details for implementing the preferred Remedial Action Alternative.
- Apparent Effects Thresholds (AETs)
 - Empirical site-specific sediment quality values for assessing potential biological effects.
- Activity and Use Limitation (AUL)
 - Written notice filed at the registry of deeds/land court noting allowed activities and uses in order to maintain a Condition of No Significant Risk.

Key Design Terminology

- Mean High Water (MHW)
 - Arithmetic mean of the daily high tides
- Upland Portion
 - Area above MHW line (shown in yellow)
- Shore Portion
 - Area below MHW line (shown in blue)
- Revetment
 - Sloping stone protection on a shoreline to absorb and dissipate wave energy and reduce erosion
- Cobbles
 - Rounded natural stone material with a balanced mixture of sizes
- Rip Rap
 - Angular stone placed to protect against erosion



Final Phase III Remedial Action Alternative

Preferred Remedial Action Alternative – Upland Portion

- Extend the existing stone revetment to prevent erosion of fill containing lead and arsenic.
- Record an Activity and Use Limitation to limit potential future exposure to fill containing lead and arsenic.

Preferred Remedial Action Alternative – Shore Portion

- Remove an area of fill below Mean High Water to remove nickel and vanadium concentrations exceeding the ecological Apparent Effects Thresholds (AETs).

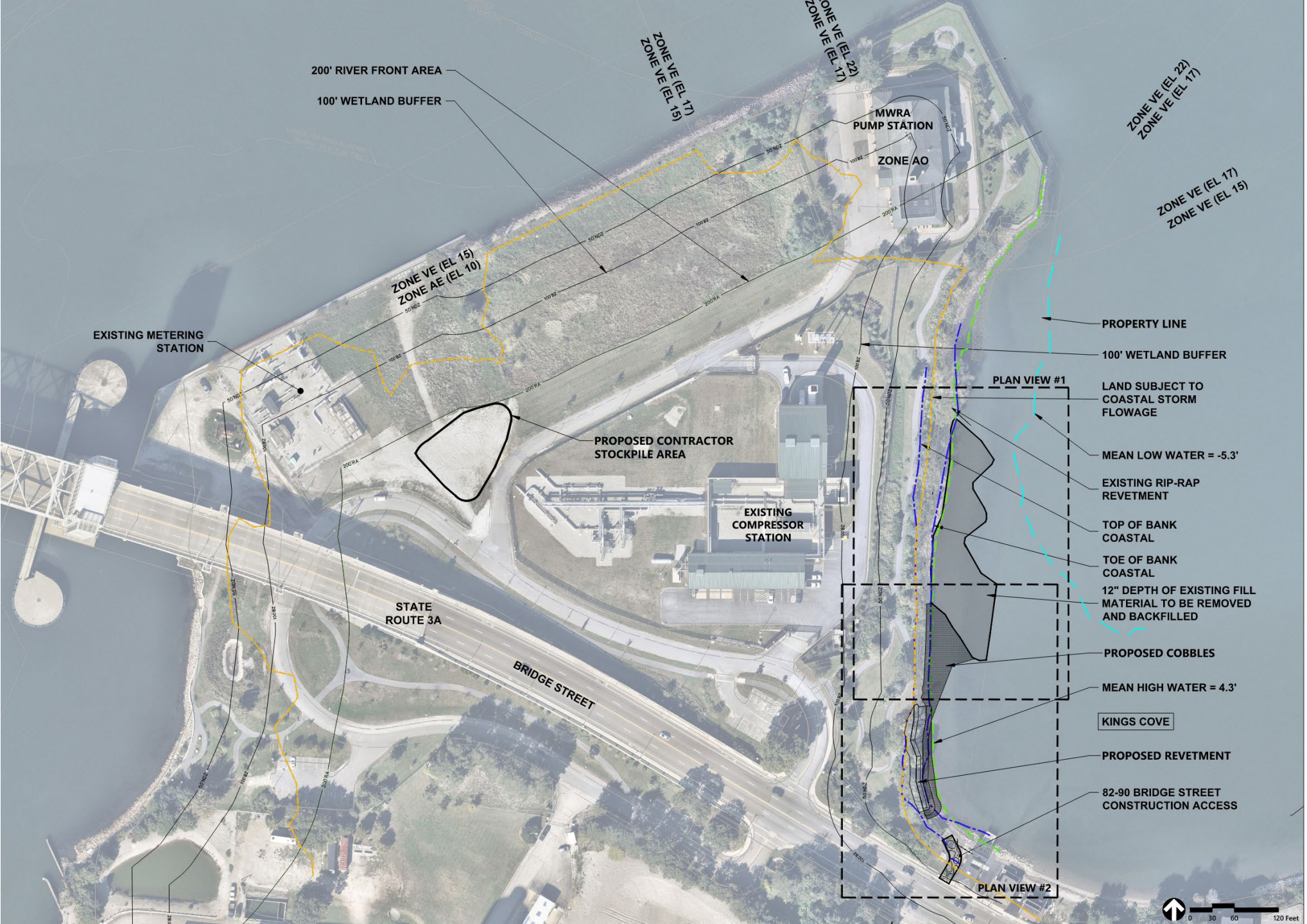
Draft Phase IV Remedy Implementation Plan

The Phase IV RIP presents the design and steps for implementation of the Preferred Remedial Action Alternative. Key elements include:

- Design Objectives for Implementation of Remedial Action Alternative
- Timeline for Implementation of Phase IV
- Conceptual and Permitting Plans
- Controls, Monitoring and Management

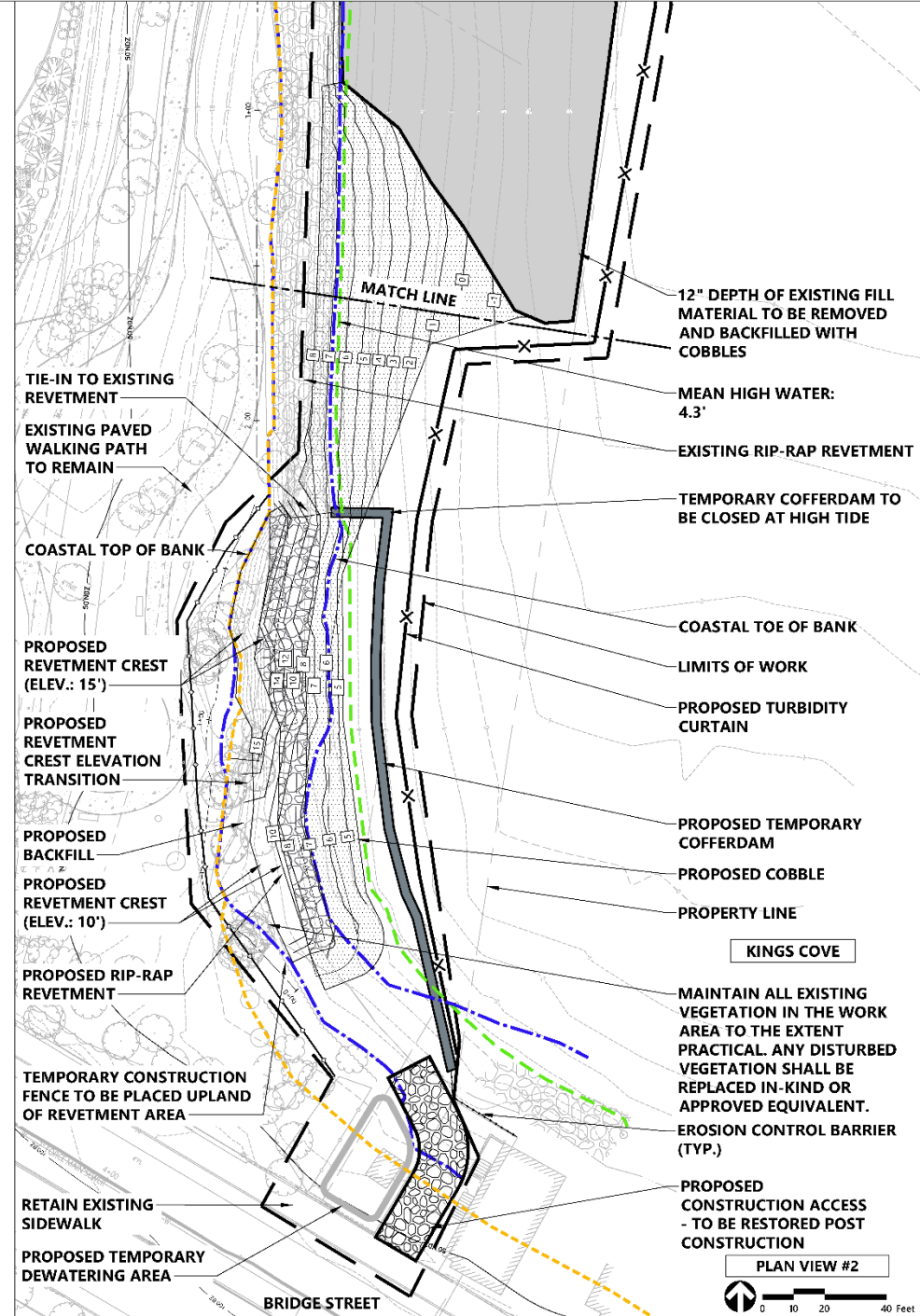
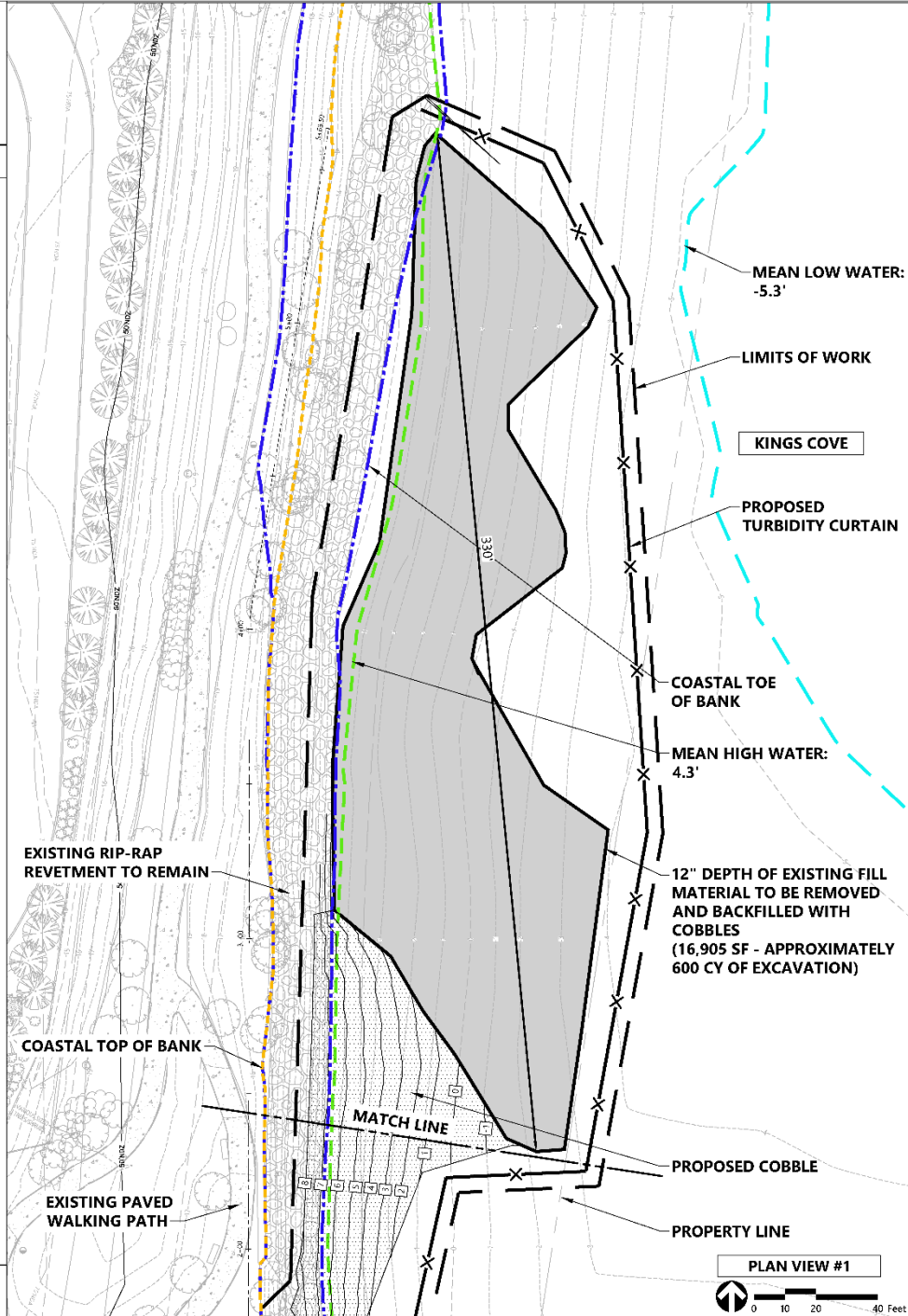


Site Overview



Site Plan

LEGEND		
Exist.	Prop.	
		COASTAL BANK
		LAND SUBJECT TO COASTAL STORM FLOWAGE
		MEAN LOW WATER
		MEAN HIGH WATER
		PROPERTY LINE
		FEMA FLOOD ZONE DELINEATION
		50' NO DISTURB ZONE
		100' WETLAND BUFFER ZONE
		200' RIVERFRONT AREA
		EDGE OF PAVEMENT
		BUILDING
		EROSION CONTROL
		MINOR CONTOUR
		MAJOR CONTOUR
		CONCRETE
		RIPRAP
		MATCHLINE
		PATH
		TREE LINE
		CHAIN LINK FENCE
		EXISTING MATERIAL TO BE REMOVED AND BACKFILLED WITH COBBLES
		COBBLE BEACH



ISSUED FOR: PERMITTING
NOT FOR CONSTRUCTION

Existing Condition



Proposed

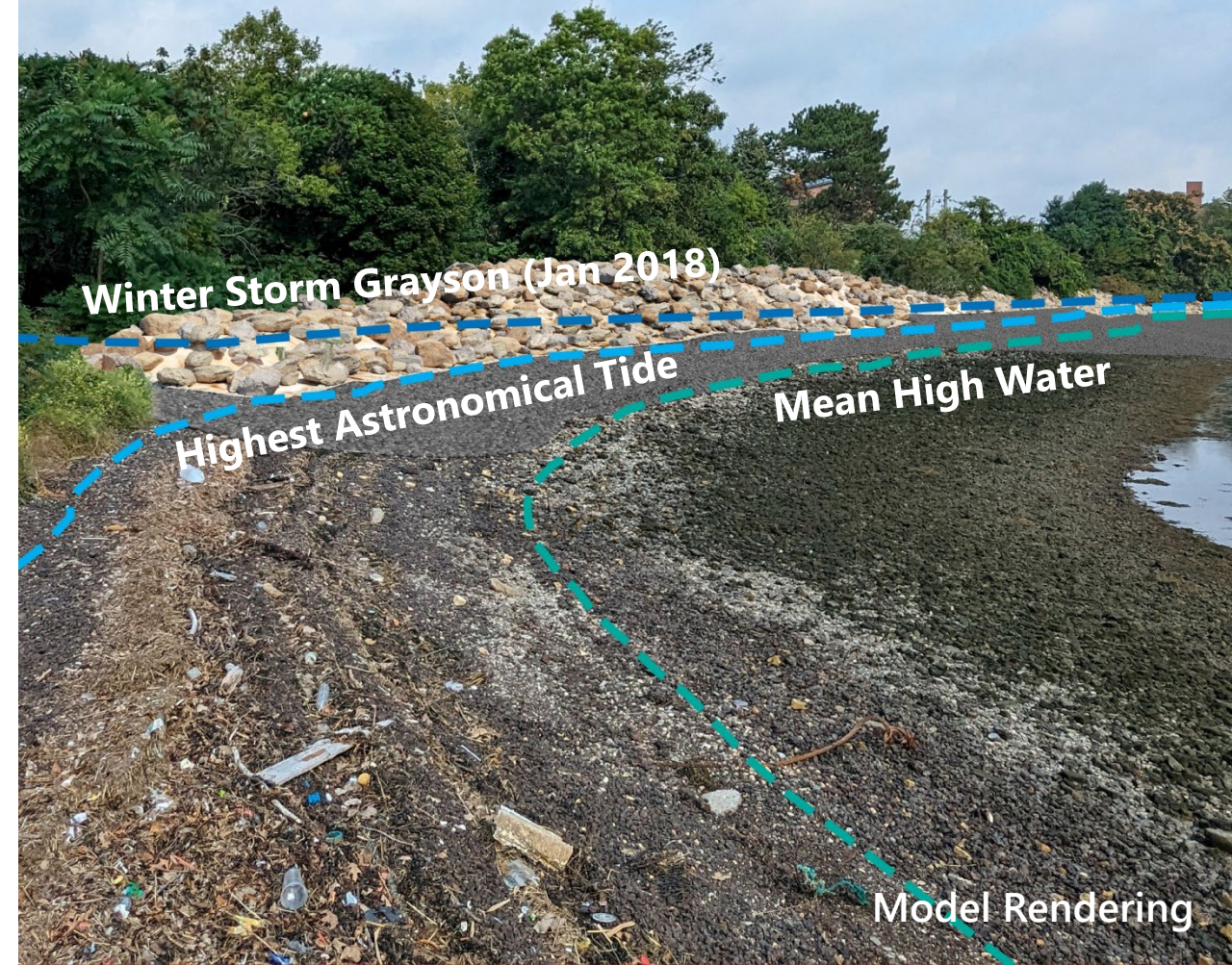


Model Rendering

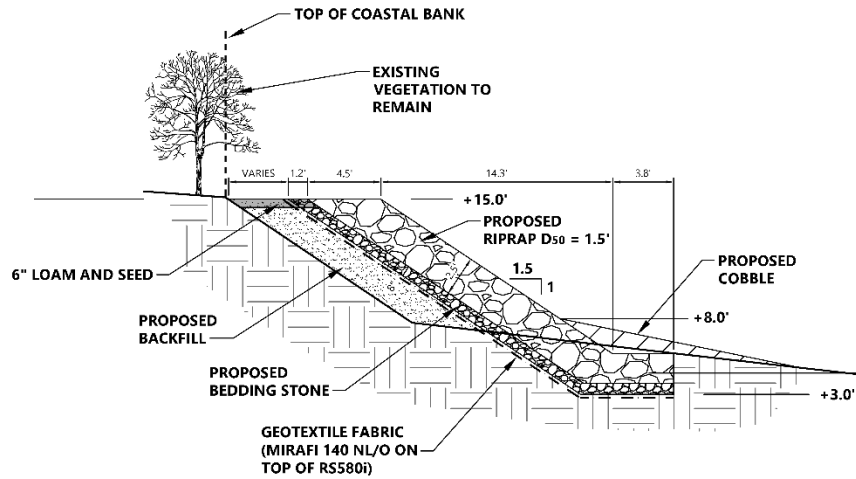
Existing Condition



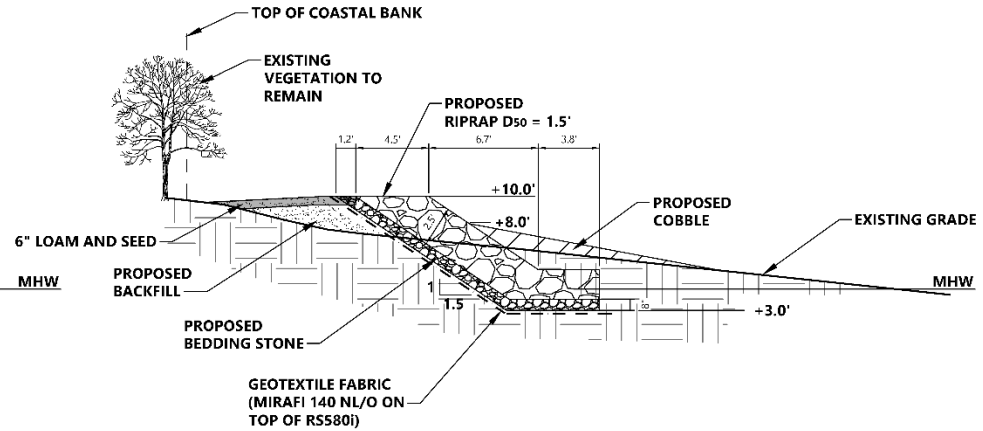
Proposed with Tidal Levels



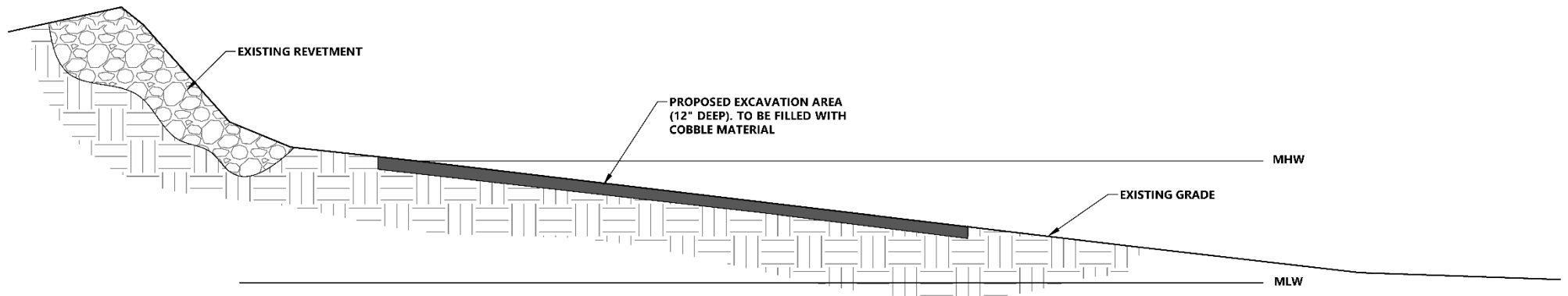
Design Sections



TYPICAL REVETMENT SECTION :
CREST +15.0' NAVD88



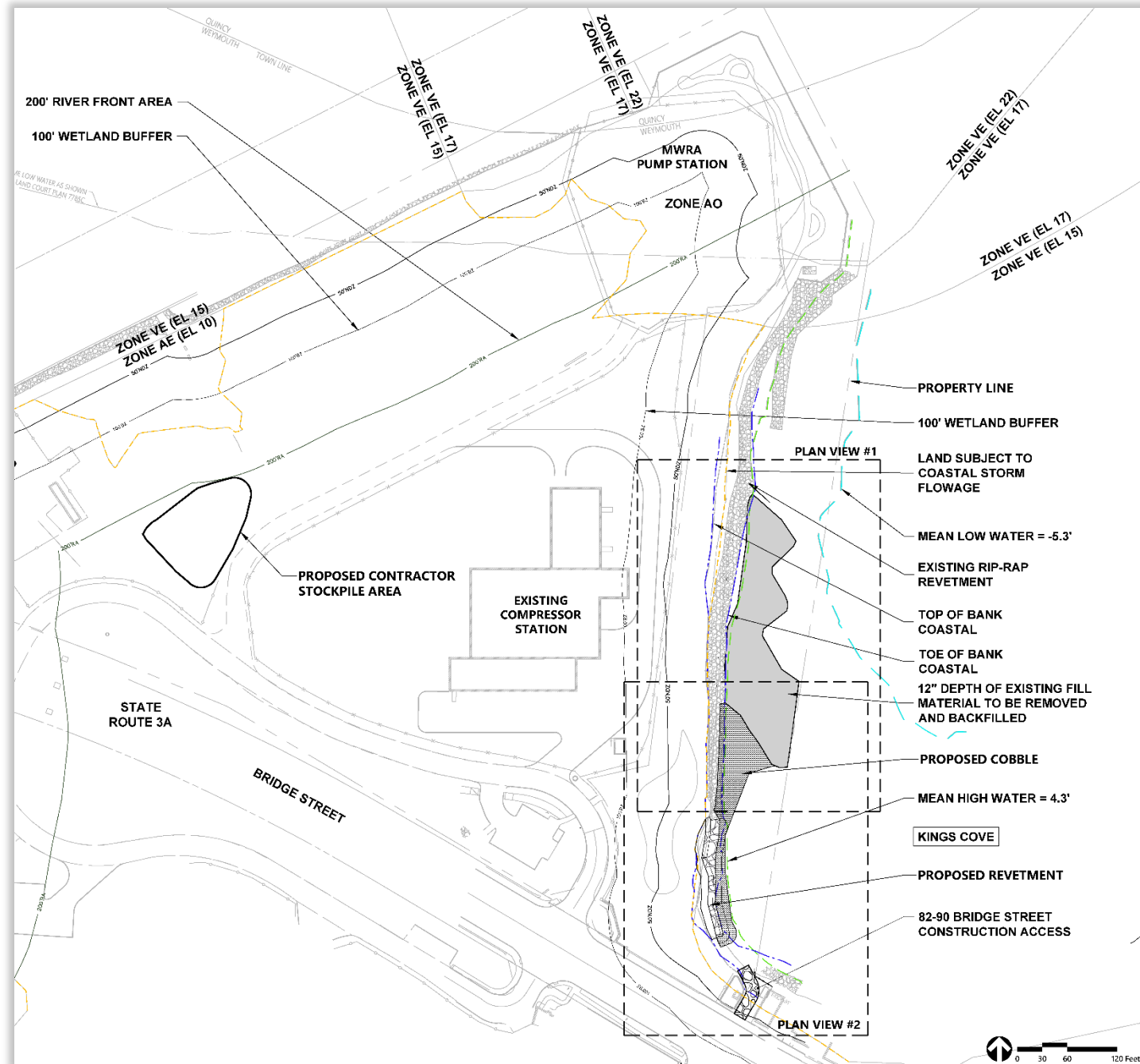
TYPICAL REVETMENT SECTION :
CREST +10.0' NAVD88



TYPICAL EXCAVATION AND FILL SECTION

Construction Phasing

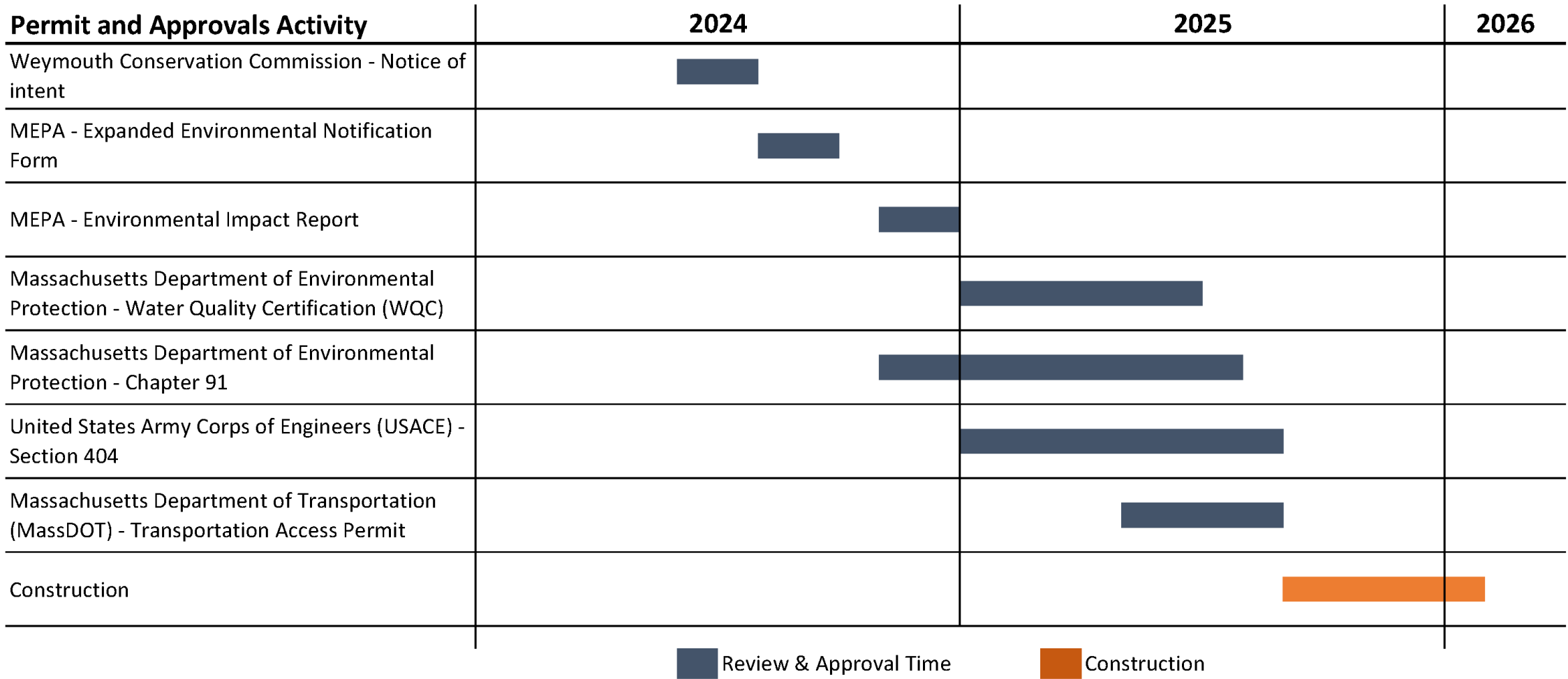
1. Collect soil/sediment samples to determine disposition.
2. Install site controls.
3. Install construction access via Bridge Street.
4. Dredge during low tide cycles.
5. Place dredged material in staging area awaiting reuse or disposal.
6. Place clean cobble cover.
7. Construct the rip rap revetment including reusing a subset of dredged material.
8. Off-site disposal of remaining dredged material.
9. Restoration of construction access and staging areas.
10. Removal of site controls.



Environmental Permits

- **Order of Conditions** from the Weymouth Conservation Commission
- Review under the **Massachusetts Environmental Policy Act** with the Massachusetts Executive Office of Energy and Environmental Affairs
- **Chapter 91 License** and **401 Water Quality Certification** from the Massachusetts Department of Environmental Protection
- **Clean Water Act Section 404 Pre-Construction Notification** to the US Army Corps of Engineers
- **National Pollution Discharge Elimination System (NPDES) Permits** for construction stormwater and dewatering from the U.S. Environmental Protection Agency
- **Access Permit** from the Massachusetts Department of Transportation

Environmental Permitting Schedule



How to reach us:

WeymouthCompressorStation@vhb.com

Phase IV RIP comment period ends on **May 28, 2024**





Q&A Period